



Sunday 3<sup>rd</sup> May 2026

# Chislehurst Methodist Church

[www.chislehurstmethodistchurch.org.uk](http://www.chislehurstmethodistchurch.org.uk)

CCLI95928

*Dear Chislehurst Methodist Church members and friends,*

## **WELCOME**

As a Methodist Church congregation we are part of the Widmore Circuit of the Methodist Church, and we share its commitment to be inclusive, caring and creative in sharing our faith.

## **Worship with us**

All are welcome to attend our services at Chislehurst Methodist Church, no matter what you believe. You do not have to be a Christian or a practicing member of the Methodist Church to join our worship. You can simply come and listen, or join in as you are able to do. We pray that you may experience the presence of God in Jesus Christ.

We celebrate our life through beautiful worship and a friendly community, welcoming and supporting those in the community as we walk together.

We strive to see and include everyone and welcome the gifts and talents of all.

If you are new to the church, please introduce yourself to us and we will be happy to tell you more about what happens here in Chislehurst Methodist Church.

We hope you will find yourself at home amongst us.

## **ALL ARE WELCOME**

God bless you richly, *Rev Hannah Faal-Heim*



## Contact Us

**Minister:** Rev'd Hannah Faal-Heim (Day off - Monday)

M: 07446 949 155

E: [bishophcfaalheim@gmail.com](mailto:bishophcfaalheim@gmail.com)

### **Church office:**

Tue - Thu, 10AM - 3PM

T: 020 8468 7695 / M: 07720 617 426

E: [office@chislehurstmethodistchurch.org.uk](mailto:office@chislehurstmethodistchurch.org.uk)



Please take this notice  
sheet home with you

## Order of Service

**Preacher: Rev Hannah Faal-Heim – Holy Communion – Junior Church**

Stewards Welcome

Call to Worship

Prayers

*Hymn (STF) 465 Guide me O thou great Jehovah*

**Scripture Reading: 1 Peter 2: 2-10**

<sup>2</sup> Like newborn infants, long for the pure, spiritual milk, so that by it you may grow into salvation— <sup>3</sup> if indeed you have tasted that the Lord is good.

<sup>4</sup> Come to him, a living stone, though rejected by mortals yet chosen and precious in God's sight, and <sup>5</sup> like living stones, let yourselves be built<sup>[a]</sup> into a spiritual house, to be a holy priesthood, to offer spiritual sacrifices acceptable to God through Jesus Christ. <sup>6</sup> For it stands in scripture:

'See, I am laying in Zion a stone,  
a cornerstone chosen and precious;  
and whoever believes in him<sup>[b]</sup> will not be put to shame.'

<sup>7</sup> To you then who believe, he is precious; but for those who do not believe,

'The stone that the builders rejected  
has become the very head of the corner',

<sup>8</sup> and

'A stone that makes them stumble,  
and a rock that makes them fall.'

They stumble because they disobey the word, as they were destined to do.

<sup>9</sup> But you are a chosen race, a royal priesthood, a holy nation, God's own people,<sup>[c]</sup> in order that you may proclaim the mighty acts of him who called you out of darkness into his marvellous light.

<sup>10</sup> Once you were not a people,  
but now you are God's people;  
once you had not received mercy,  
but now you have received mercy.

**Scripture Reading: John 14:1-14**

## **Jesus the Way to the Father**

**14** 'Do not let your hearts be troubled. Believe<sup>[a]</sup> in God, believe also in me. <sup>2</sup> In my Father's house there are many dwelling-places. If it were not so, would I have told you that I go to prepare a place for you?<sup>[b]</sup> <sup>3</sup> And if I go and prepare a place for you, I will come again and will take you to myself, so that where I am, there you may be also. <sup>4</sup> And you know the way to the place where I am going.'<sup>[c]</sup> <sup>5</sup> Thomas said to him, 'Lord, we do not know where you are going. How can we know the way?' <sup>6</sup> Jesus said to him, 'I am the way, and the truth, and the life. No one comes to the Father except through me. <sup>7</sup> If you know me, you will know<sup>[d]</sup> my Father also. From now on you do know him and have seen him.'

<sup>8</sup> Philip said to him, 'Lord, show us the Father, and we will be satisfied.' <sup>9</sup> Jesus said to him, 'Have I been with you all this time, Philip, and you still do not know me? Whoever has seen me has seen the Father. How can you say, "Show us the Father"? <sup>10</sup> Do you not believe that I am in the Father and the Father is in me? The words that I say to you I do not speak on my own; but the Father who dwells in me does his works. <sup>11</sup> Believe me that I am in the Father and the Father is in me; but if you do not, then believe me because of the works themselves. <sup>12</sup> Very truly, I tell you, the one who believes in me will also do the works that I do and, in fact, will do greater works than these, because I am going to the Father. <sup>13</sup> I will do whatever you ask in my name, so that the Father may be glorified in the Son. <sup>14</sup> If in my name you ask me<sup>[e]</sup> for anything, I will do it

## **Reflection**

*Hymn (STF) 345 And can it be*

Prayers of Intercession

*Hymn: 660 Called by Christ to be disciples*

Prayers of Intercession

The Offertory

**The Holy Communion**

After Communion Reflection - Music

*Hymn: This Little Light of Mine*

Blessing



Christian Aid week begins 10th May,  
at that service there will be an  
opportunity to contribute to their work.

---

Next service:

Sunday 10<sup>th</sup> May 2026, 10.30am – Joan Mayes and Elaine Battarbee

---

## NOTICES

### Monday Focus – Bank Holiday Monday 4<sup>th</sup> May

Good news is that Monday Focus will be meeting at the usual time in the Wesley Room at 12.45 pm. There will be a sandwich lunch £10 pp. - Followed by a social.

Please do join us. All are welcome.

Rosemary 07791603668

## THE HEALING CAFE Live 2026 – Bible Study, Prayer and Refreshments

Each Session we will explore popular words and phrases that are still relevant and meaningful for us today.

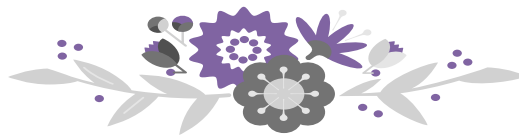
**ALL ARE WELCOME**

| Chislehurst Methodist Church | Mottingham Methodist Church           | Freeman Ghanaian Methodist Church<br>Clock House, Beckenham |
|------------------------------|---------------------------------------|-------------------------------------------------------------|
| Fridays 10.00 - 11.30        | Fridays 17.00 - 18.30 & 19.00 – 21.00 | Saturdays 11.30 – 13.00                                     |
| Week 1:                      | Friday 8 <sup>th</sup> May            | Saturday 9 <sup>th</sup> May                                |
| Week 2:                      | Friday 15 <sup>th</sup> May           | Saturday 16 <sup>th</sup> May                               |
| Week 3:                      | Friday 22 <sup>nd</sup> May           | Saturday 23 <sup>rd</sup> May                               |
| Week 4:                      | Friday 29 <sup>th</sup> May           | Friday 30 <sup>th</sup> May                                 |

*The funeral of Bob Lawrence will be held at*

*11.45am on Thursday 7<sup>th</sup> May at Falconwood Crematorium (Eltham).*

*All are welcome to join the family afterwards at The Bull, Chislehurst.*



*The funeral of Revd Tony Windsor will be held at*

*3pm on Friday 15<sup>th</sup> May at Orpington Methodist Church.*

## DATES FOR YOUR DIARY

|                                                                                                                                     |                                                                                                    |
|-------------------------------------------------------------------------------------------------------------------------------------|----------------------------------------------------------------------------------------------------|
| <b>The Circuit have a number of exciting events coming up over the next few months, and you are all invited to be part of them.</b> | <b>May</b><br>16th May – New Eltham Strictly Come Dancing Event                                    |
| <b>June</b><br>6th June – LPWL Away Day<br>27th June – New Eltham Quiz Night                                                        | <b>July</b><br>12th July – Service of Farewell and Thanks for Rev Duncan and Deacon Laura MacBean. |

## MEMORIAL BOOK

The memorial book is on display in the church. New entries can be added at any time so please do contact the church office if you would like to add an entry.

*We still remember and pray for all of those who have died in the month of April.*

**Jane Cowie**

*Born: 15<sup>th</sup> October 1974, Died: 5<sup>th</sup> April 2020*

**Arthur Frank Hayes**

*Born: 13<sup>th</sup> June 1921, Died: 22<sup>nd</sup> April 2020*

**Lawrence J. Wallace (Larry)**

*Born: 20<sup>th</sup> October 1933, Died: 25<sup>th</sup> April 2022*

## WE REMEMBER IN OUR PRAYERS

Those of our church community who are unwell or who have need for our prayers: Jumoke and Elizabeth Olabode, Kathryn Paszyk, John Sennett, Pam Wallace, Jeanne Pearce, Monica Faux, Christine Pott and John Lidinson. All our friends who are in care homes.

As part of the fellowship of Churches Together in Chislehurst and Bickley; this week we pray for St. Patrick's Church.



### Pastoral Support Contacts

If you need any pastoral support or know someone who does, please speak to:

**Elaine – 07963 869 198**

**Rev Hannah – 07446 949155**